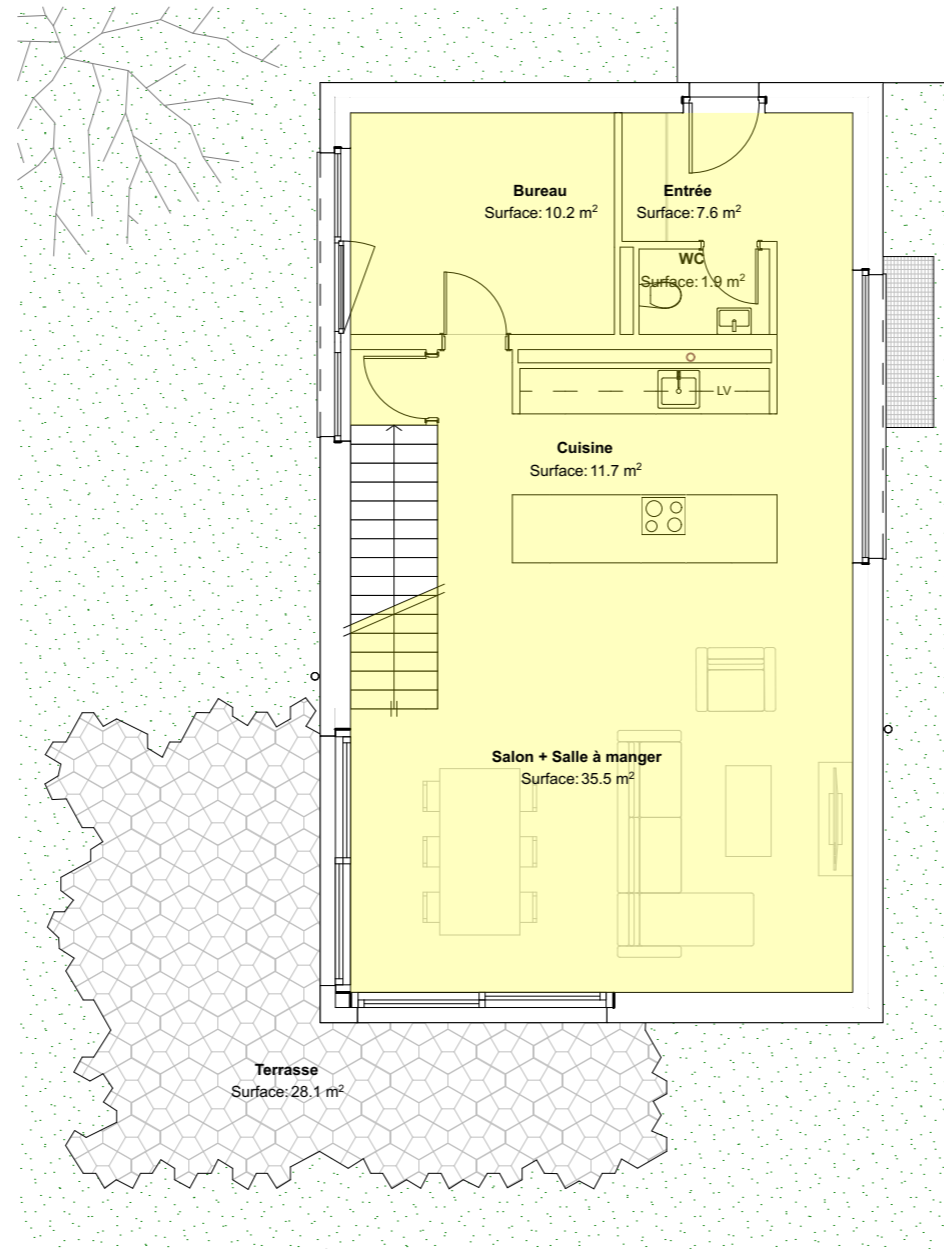
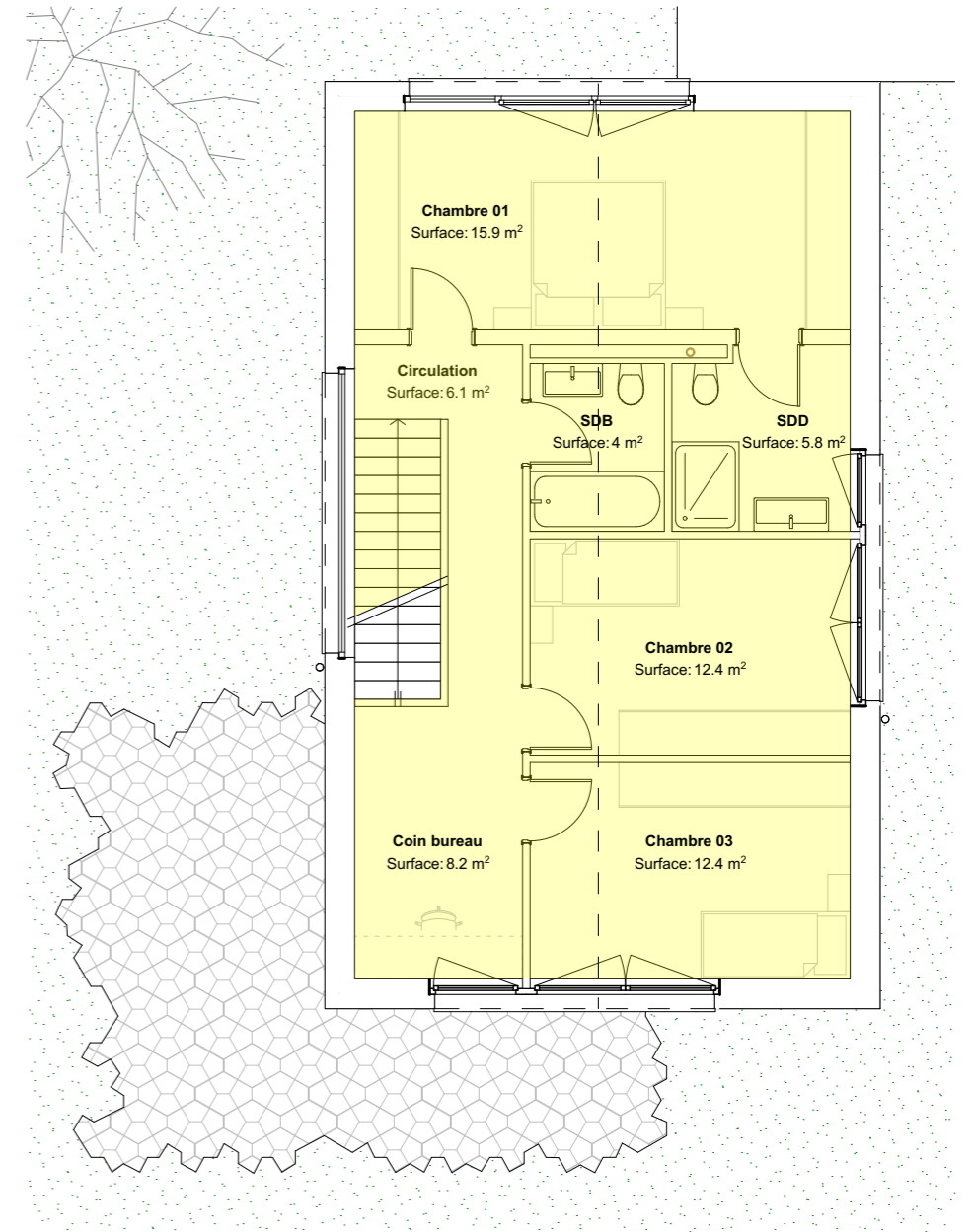


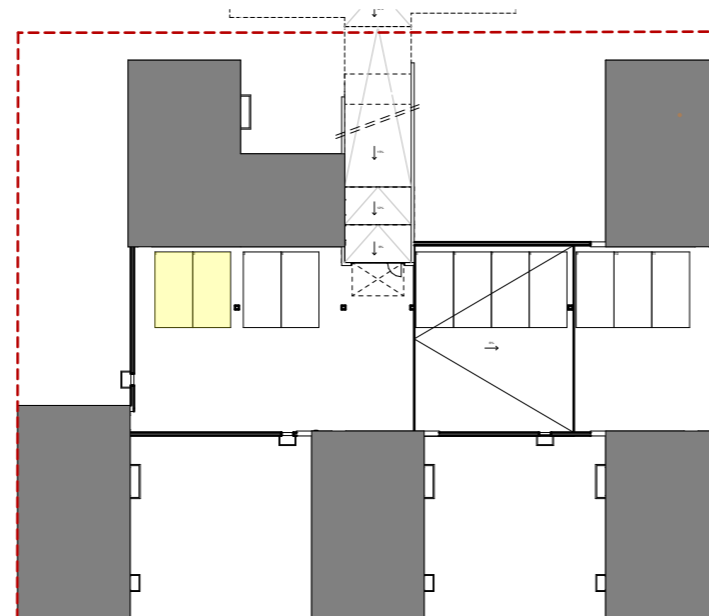
Sous-sol - 1:100



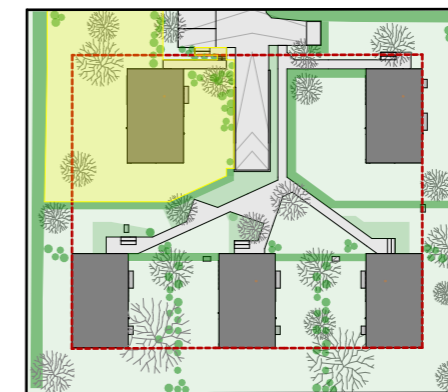
Rez-de-chaussée - 1:100



Etage - 1:100



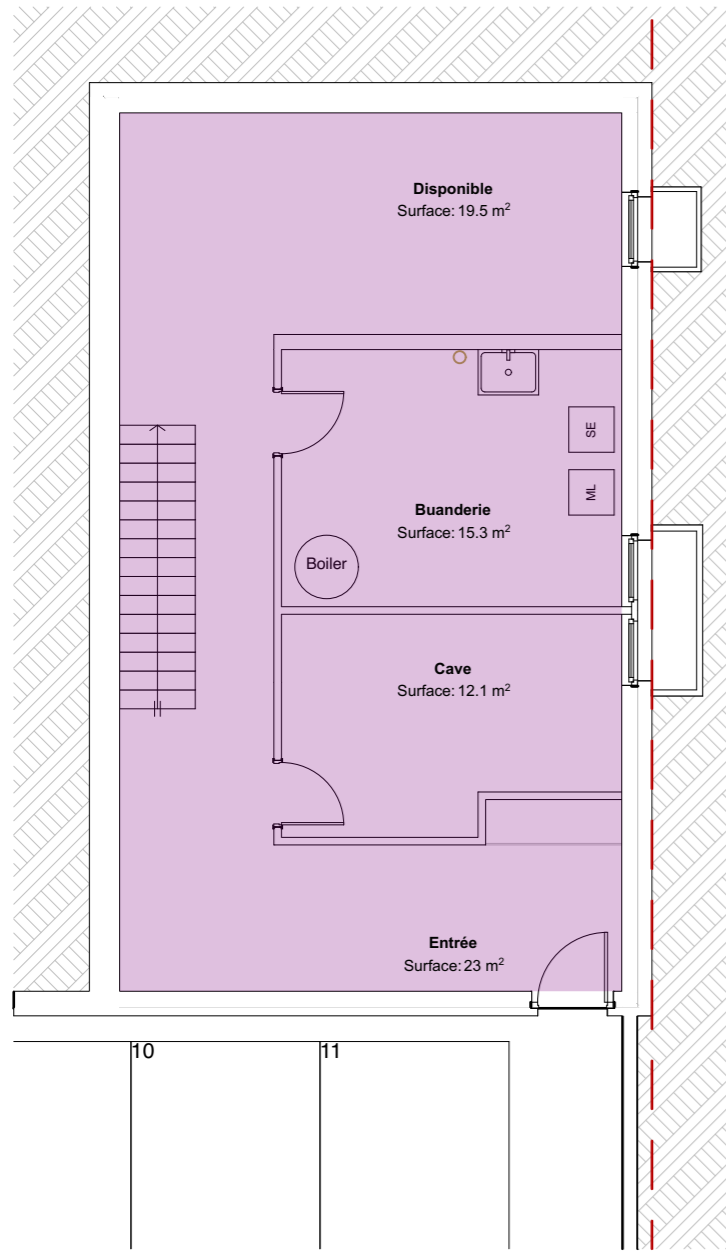
Sous-sol - 1:500



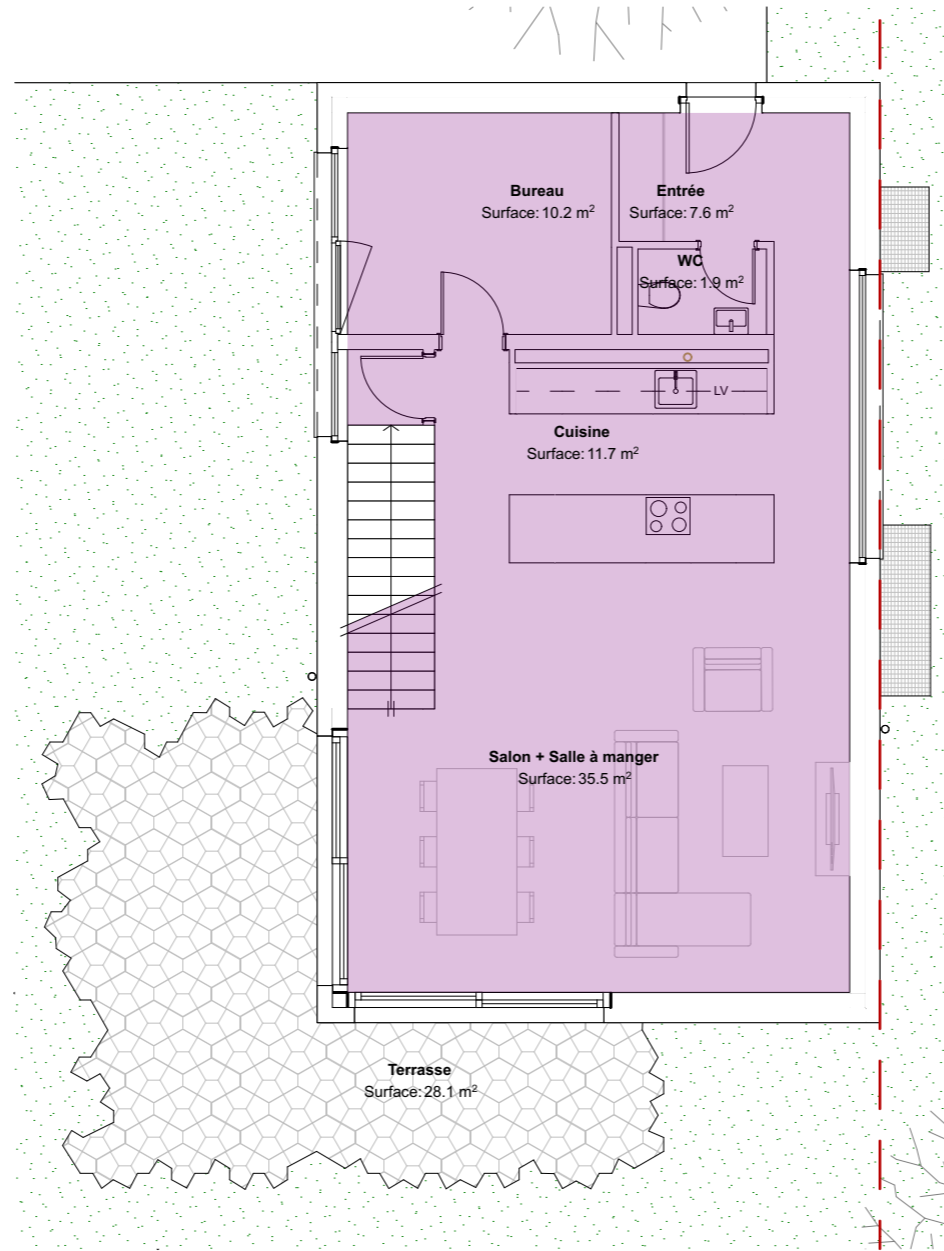
Situation - 1:1000

Récapitulatif des surfaces	
Lot 1	
Rez-de-chaussée	= 74.5 m ²
Etage	= 75.7 m ²
Surface habitable	= 150.2 m²
Sous-sol	= 77.1 m ²
Places de parc souterraines	= 25.0 m ²
Surfaces non-habitées	= 102.1 m²
Total utile	= 252.3 m²
Terrasse / jardin	= 447.1 m ²
Accès	= 15.1 m ²

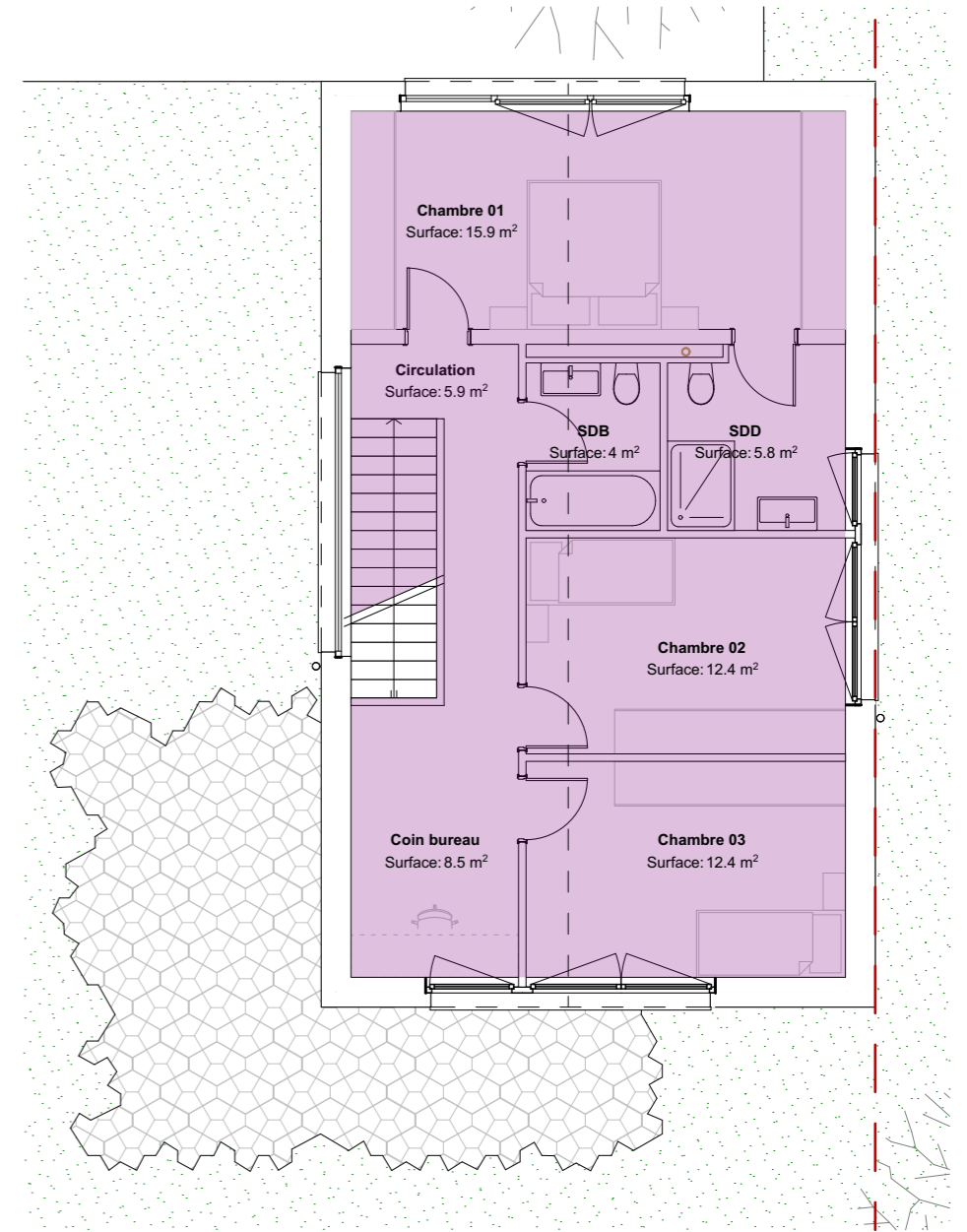




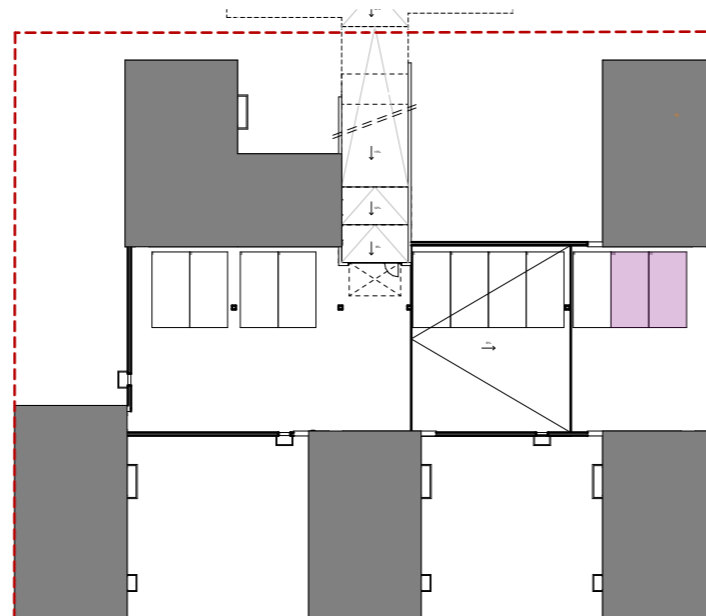
Sous-sol - 1:100



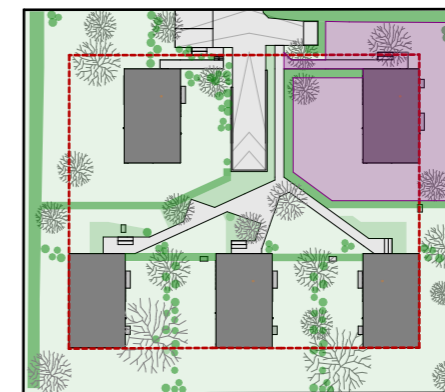
Rez-de-chaussée - 1:100



Etage - 1:100



Sous-sol - 1:500



Situation - 1:1000

Récapitulatif des surfaces

Lot 2	
Rez-de-chaussée	= 74.5 m ²
Etage	= 75.7 m ²
Surface habitable	= 150.2 m²
Sous-sol	= 77.1 m ²
Places de parc souterraines	= 25.0 m ²
Surfaces non-habitables	= 102.1 m²
Total utile	= 252.3 m²
Terrasse / jardin	= 368.2 m ²
Accès	= 24.2 m ²

Maillard
entreprise générale

Avenue de Rhodanie 46b, 1007 Lausanne
T 021.510.50.58
E info@maillard-architecture.ch
W www.maillardarchitecture.com

ADRESSE

Chemin des Mours 34 - 1080 Les Cullayes

DATE

23.10.2025

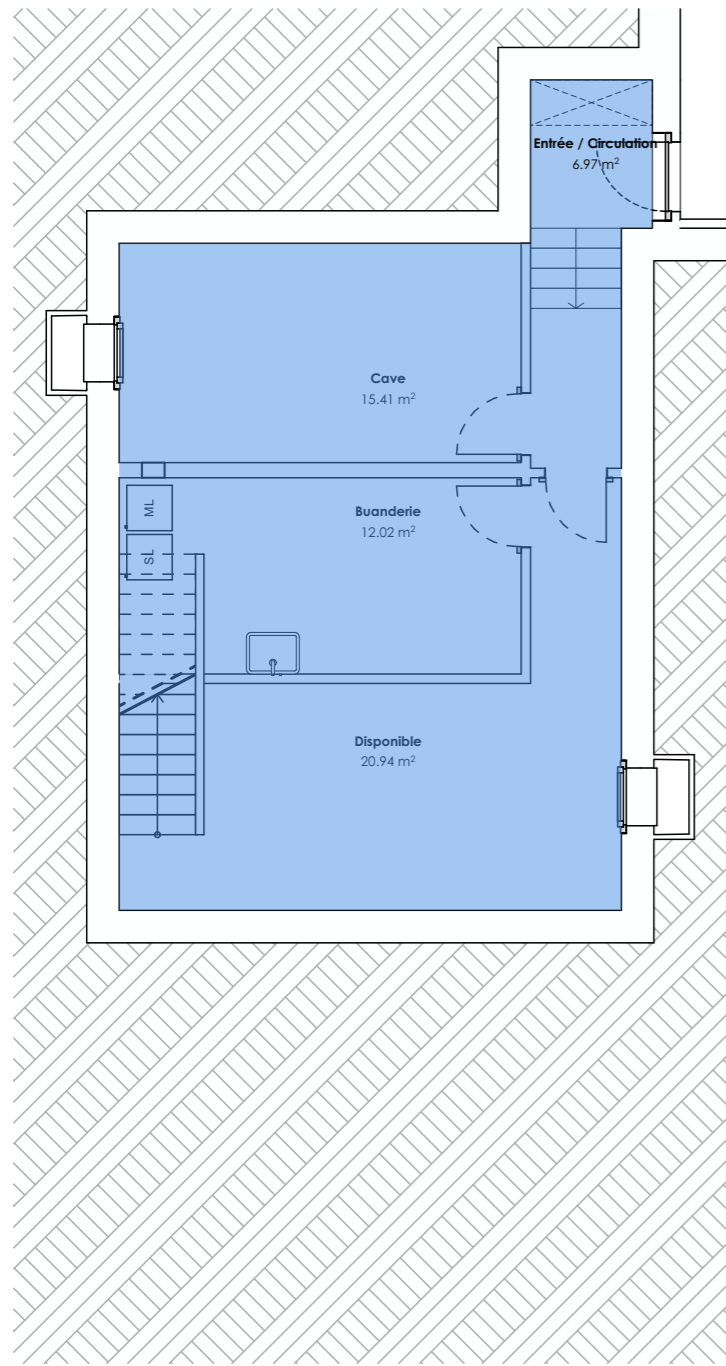
ECHELLE

1:100, 1:1000, 1:500

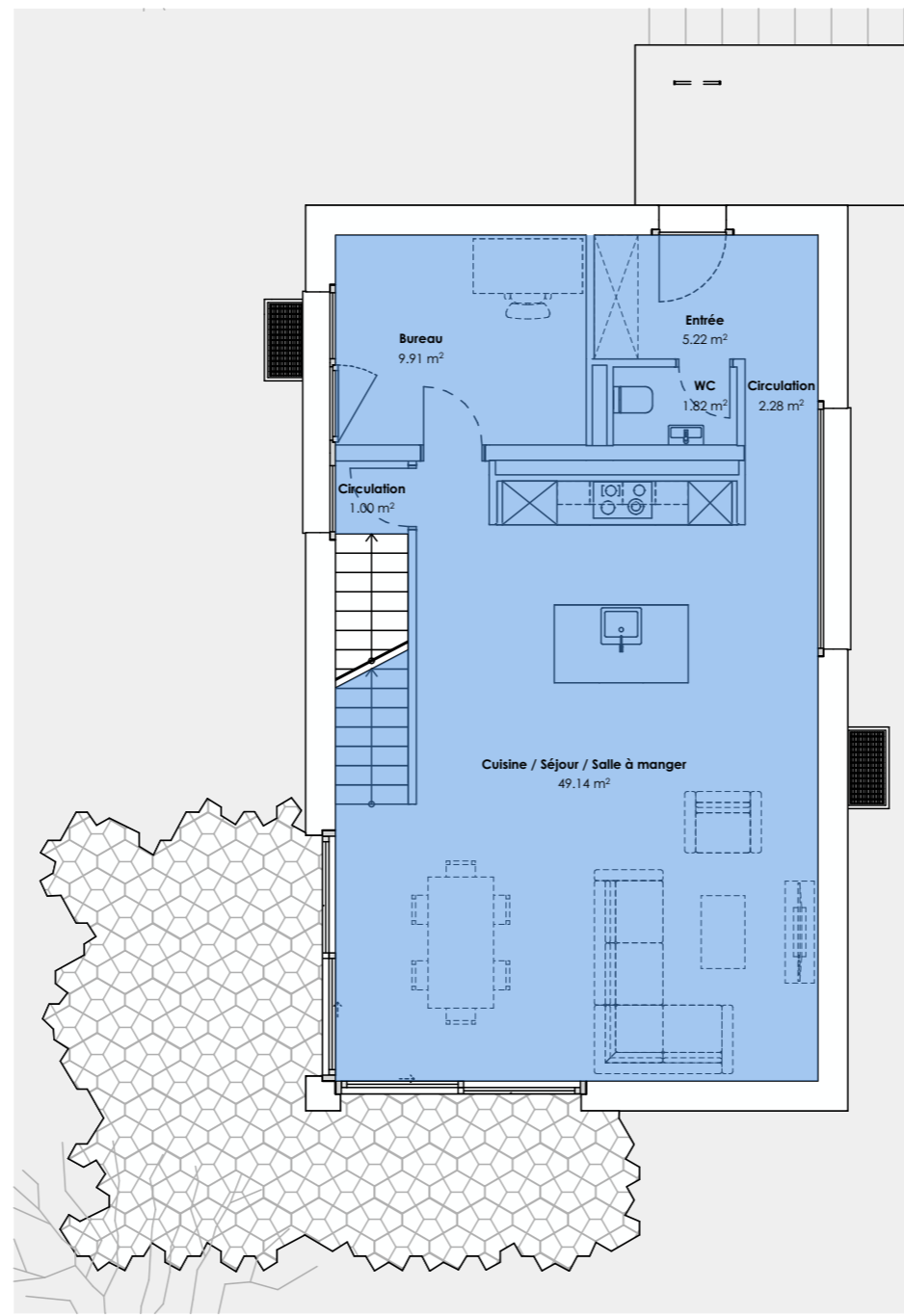
FORMAT

A3

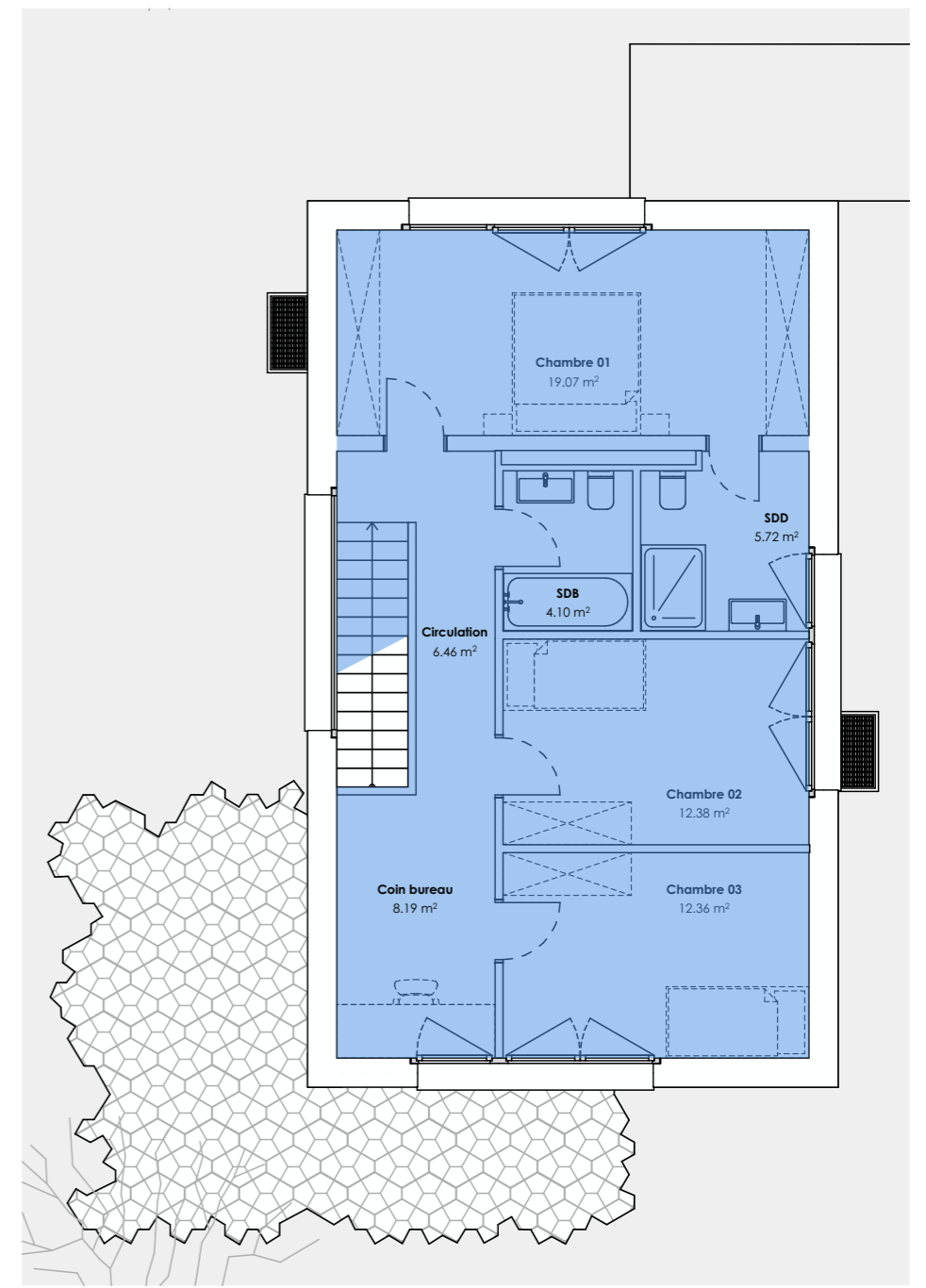




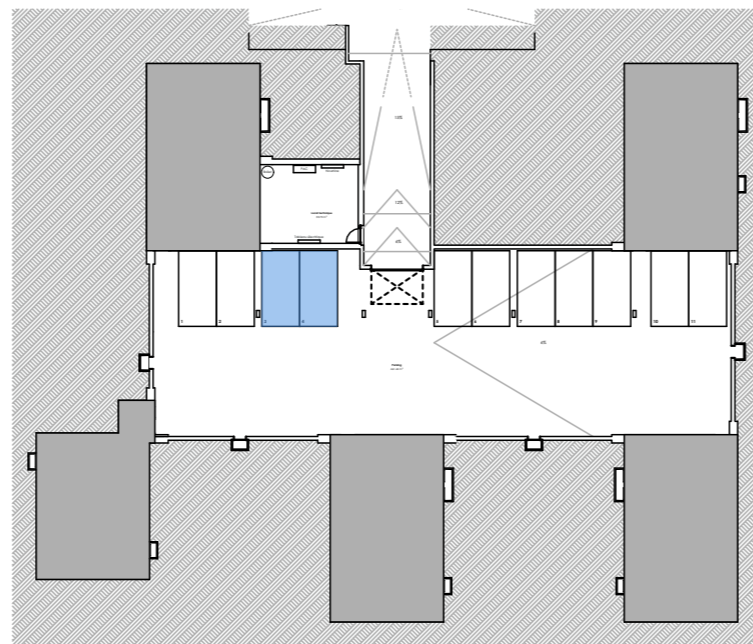
Sous-sol - 1:100



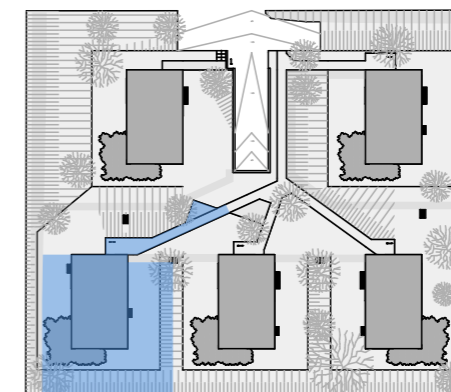
Rez-de-chaussée - 1:100



Etage - 1:100



Sous-sol - 1:500



Situation - 1:1000

Récapitulatif des surfaces

Lot 3

Rez-de-chaussée	=	75.0 m ²
Etage	=	75.0 m ²
Surface habitable	=	150.0 m²

Sous-sol	=	62.0 m ²
Places de parc souterraines	=	25.0 m ²
Surfaces non-habitables	=	87.0 m²

Total utile	=	237.0 m²
--------------------	----------	----------------------------

Terrasse / jardin	=	222.3 m ²
Accès	=	31.0 m ²

Maillard entreprise générale
 Avenue de Rhodanie 46b, 1007 Lausanne
 T 021.510.50.58
 E info@maillard-architecture.ch
 W www.maillardarchitecture.com

ADRESSE

Chemin des Moures 34 1080 Les Cullayes

DATE

12.05.26

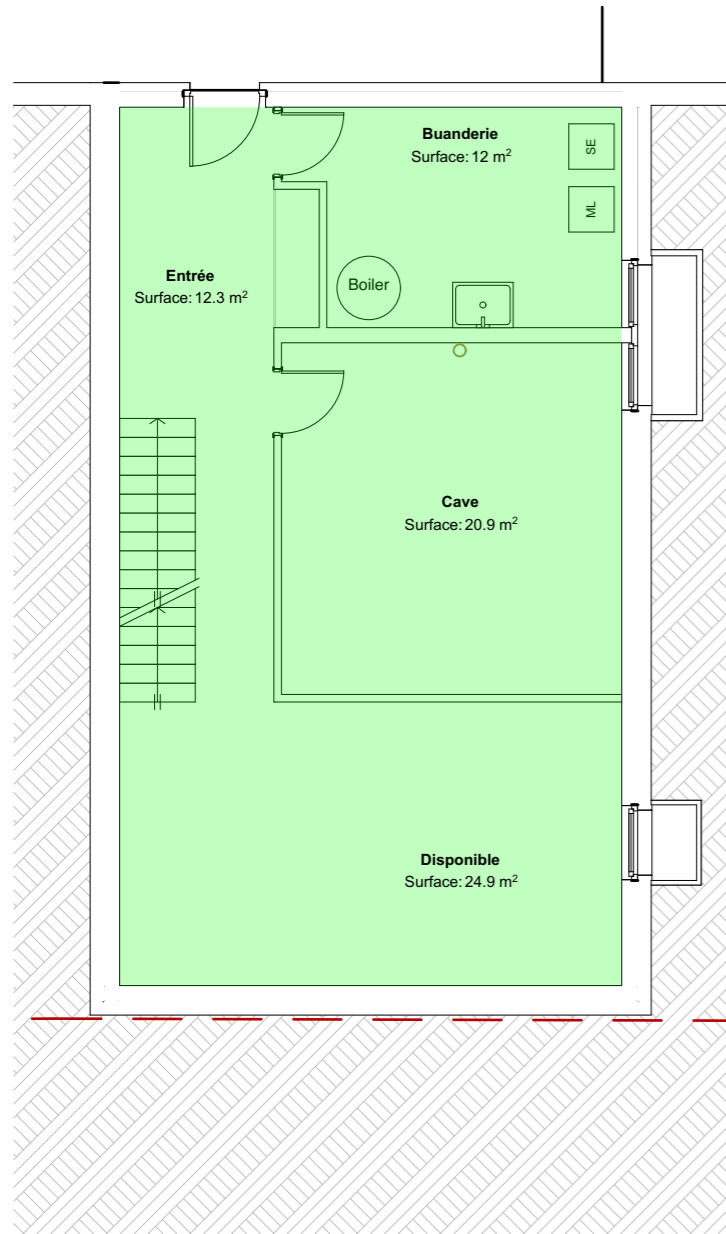
ECHELLE

1:100, 1:500, 1:1000

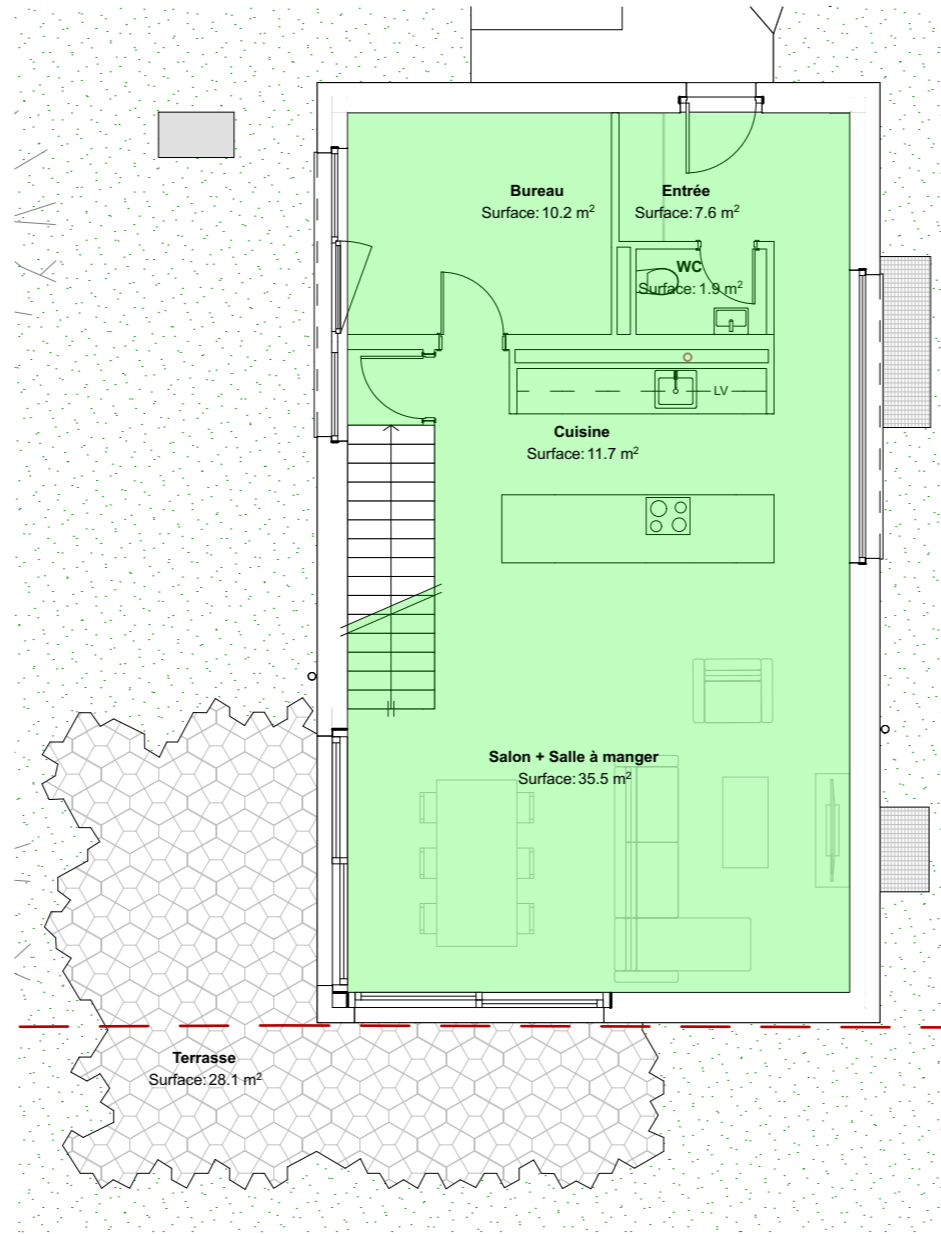
FORMAT

42.0 x 29.7 cm

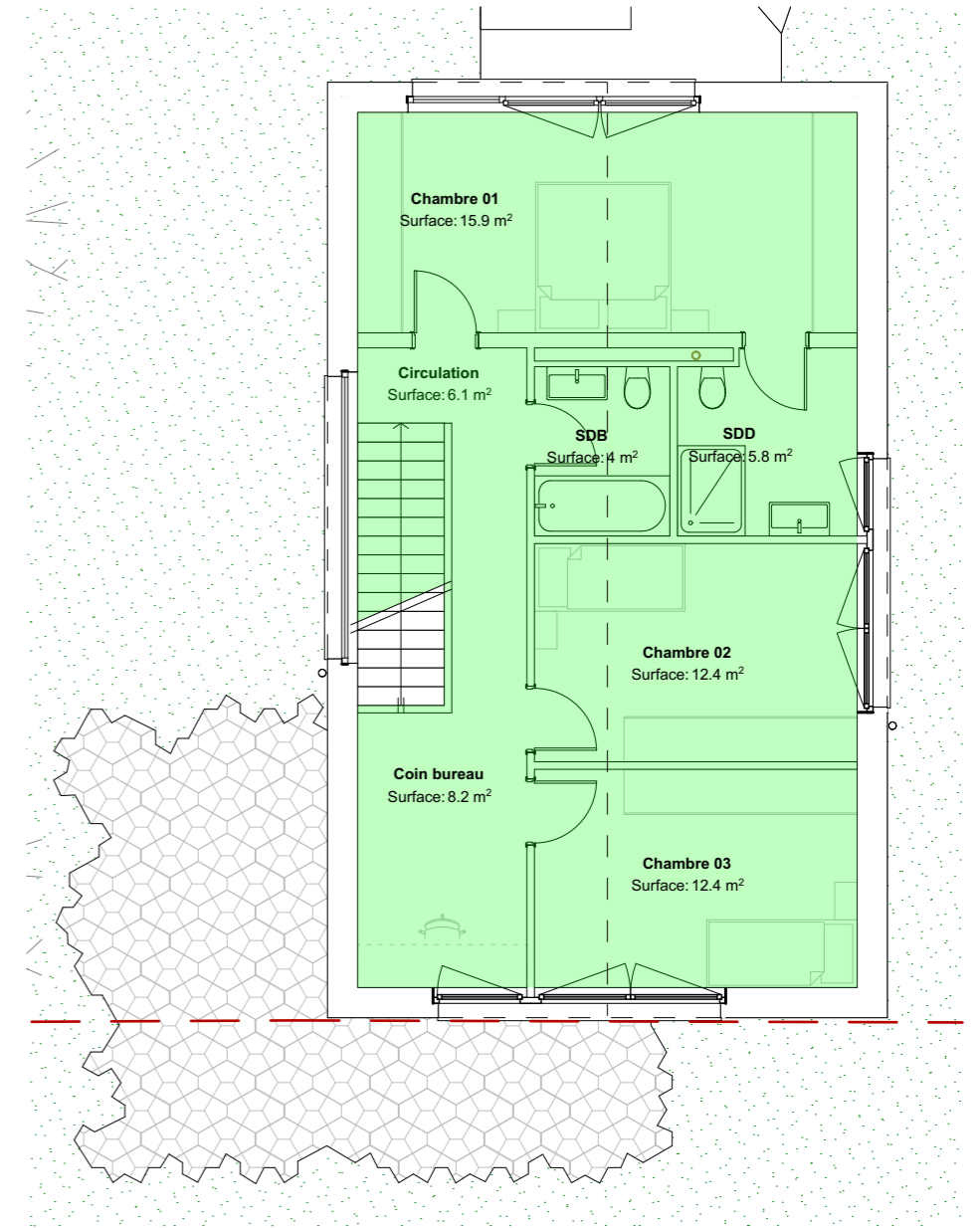




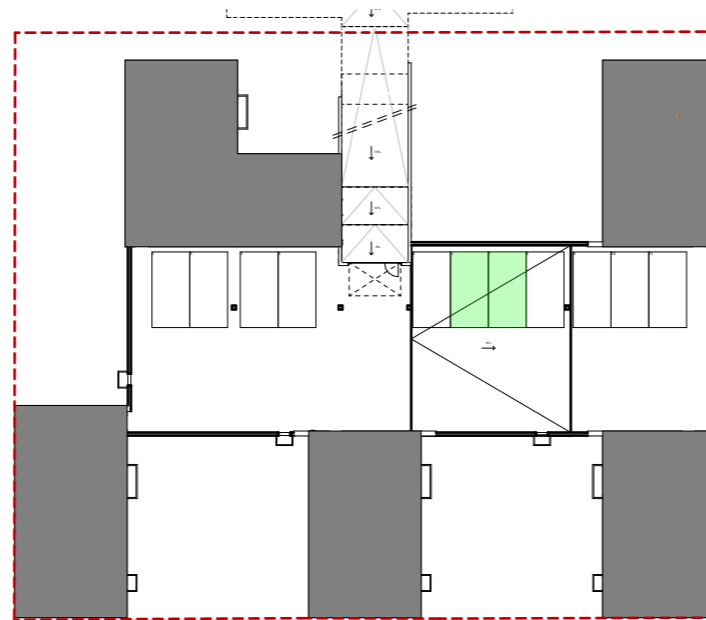
Sous-sol - 1:100



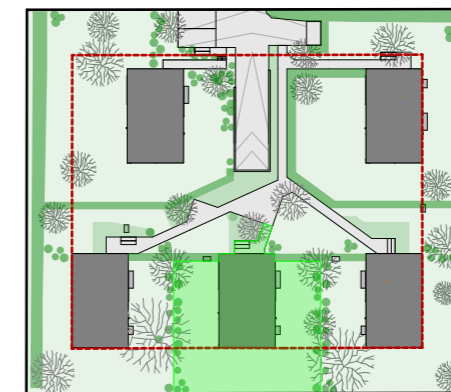
Rez-de-chaussée - 1:100



Etage - 1:100



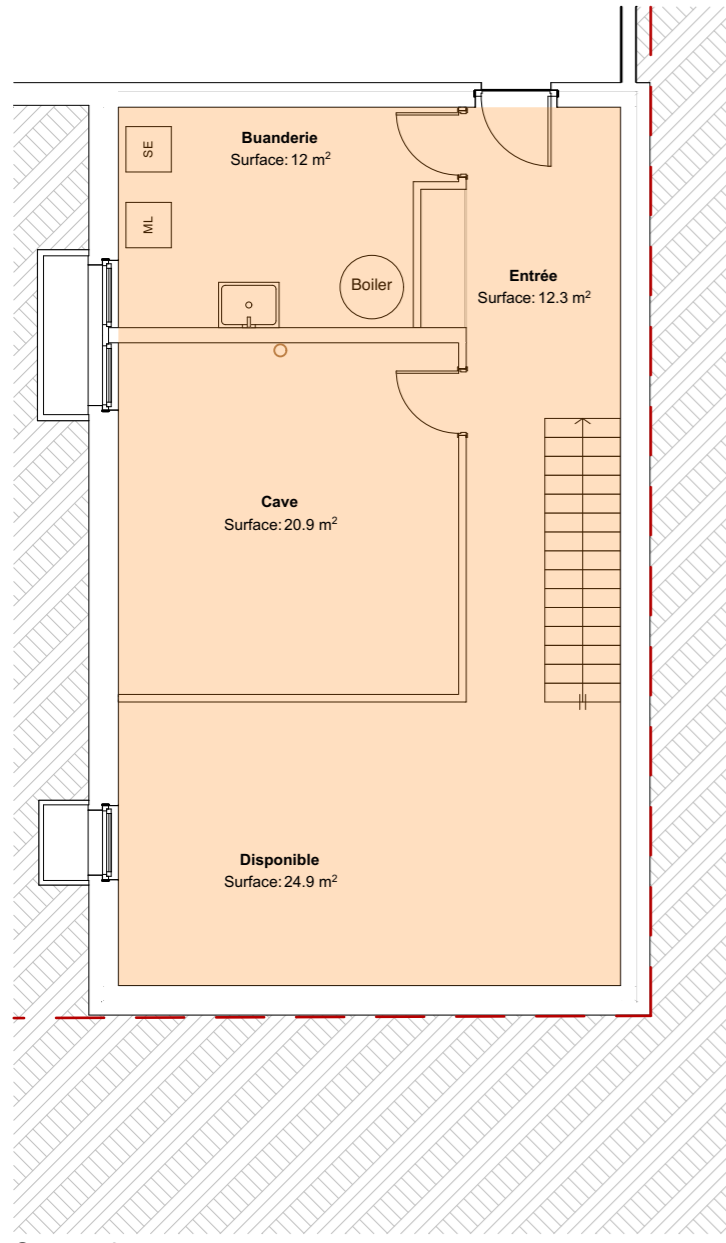
Sous-sol - 1:500



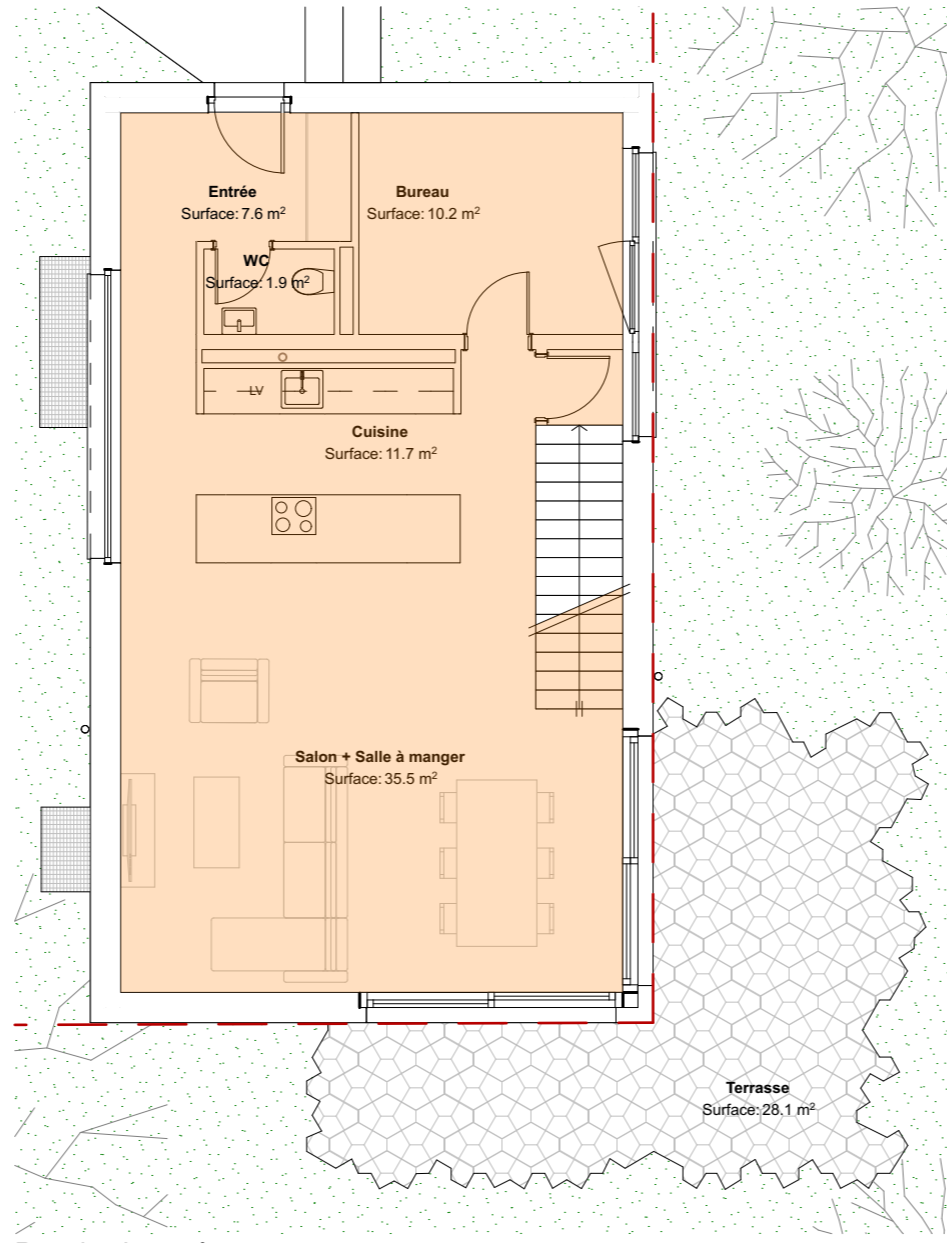
Situation - 1:1000

Récapitulatif des surfaces	
Lot 4	
Rez-de-chaussée	= 74.5 m ²
Etage	= 75.7 m ²
Surface habitable	= 150.2 m²
Sous-sol	= 77.1 m ²
Places de parc souterraines	= 25.0 m ²
Surfaces non-habitables	= 102.1 m²
Total utile	= 252.3 m²
Terrasse / jardin	= 254.9 m ²
Accès	= 9.7 m ²

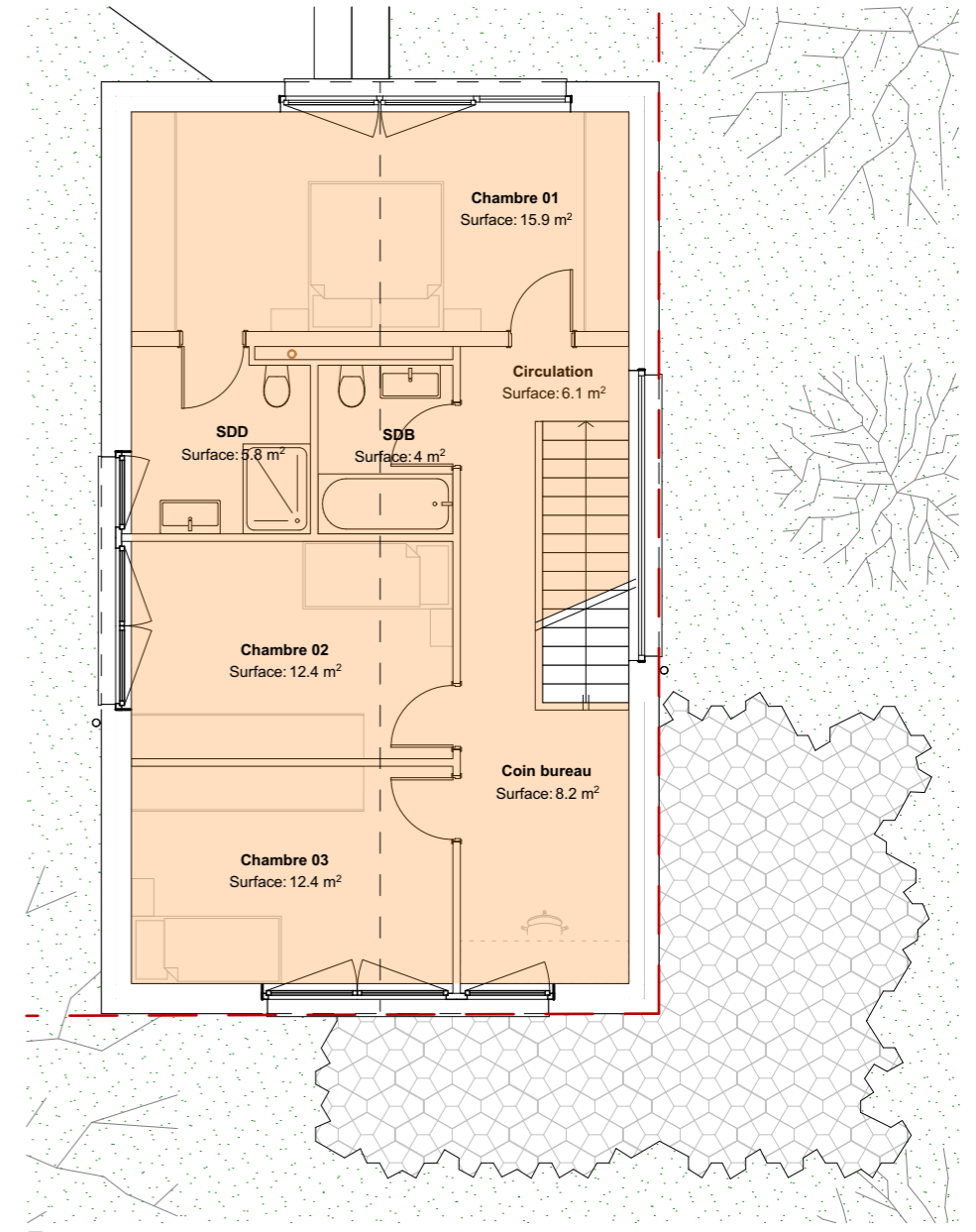




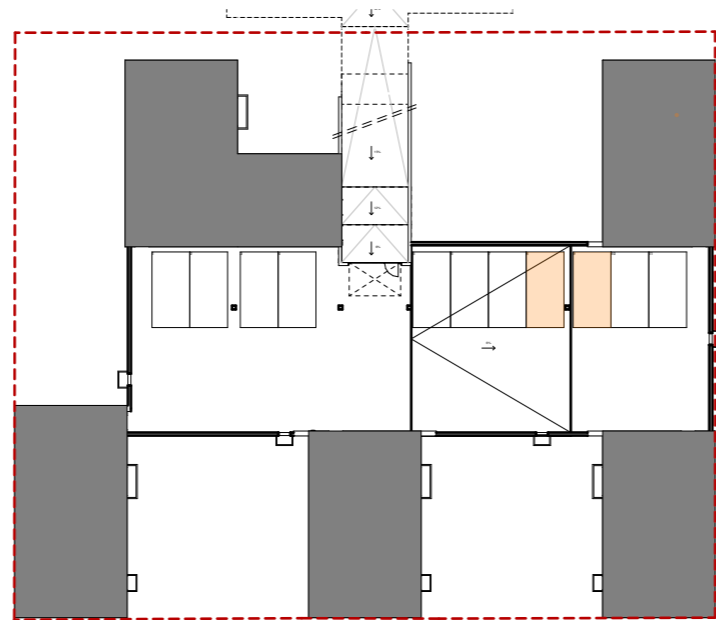
Sous-sol - 1:100



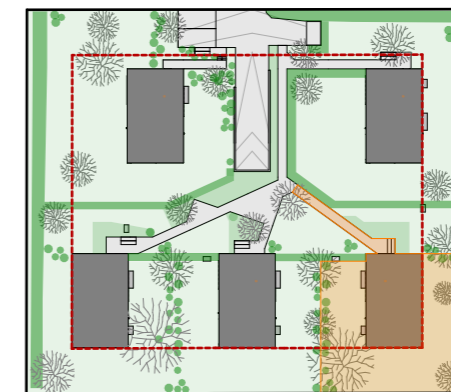
Rez-de-chaussée - 1:100



Étage - 1:100



Sous-sol - 1:500



Situation - 1:1000

Récapitulatif des surfaces	
Lot 5	
Rez-de-chaussée	= 74.5 m ²
Étage	= 75.7 m ²
Surface habitable	= 150.2 m²
Sous-sol	= 77.1 m ²
Places de parc souterraines	= 25.0 m ²
Surfaces non-habitable	= 102.1 m²
Total utile	= 252.3 m²
Terrasse / jardin	= 253.1 m ²
Accès	= 21.0 m ²

